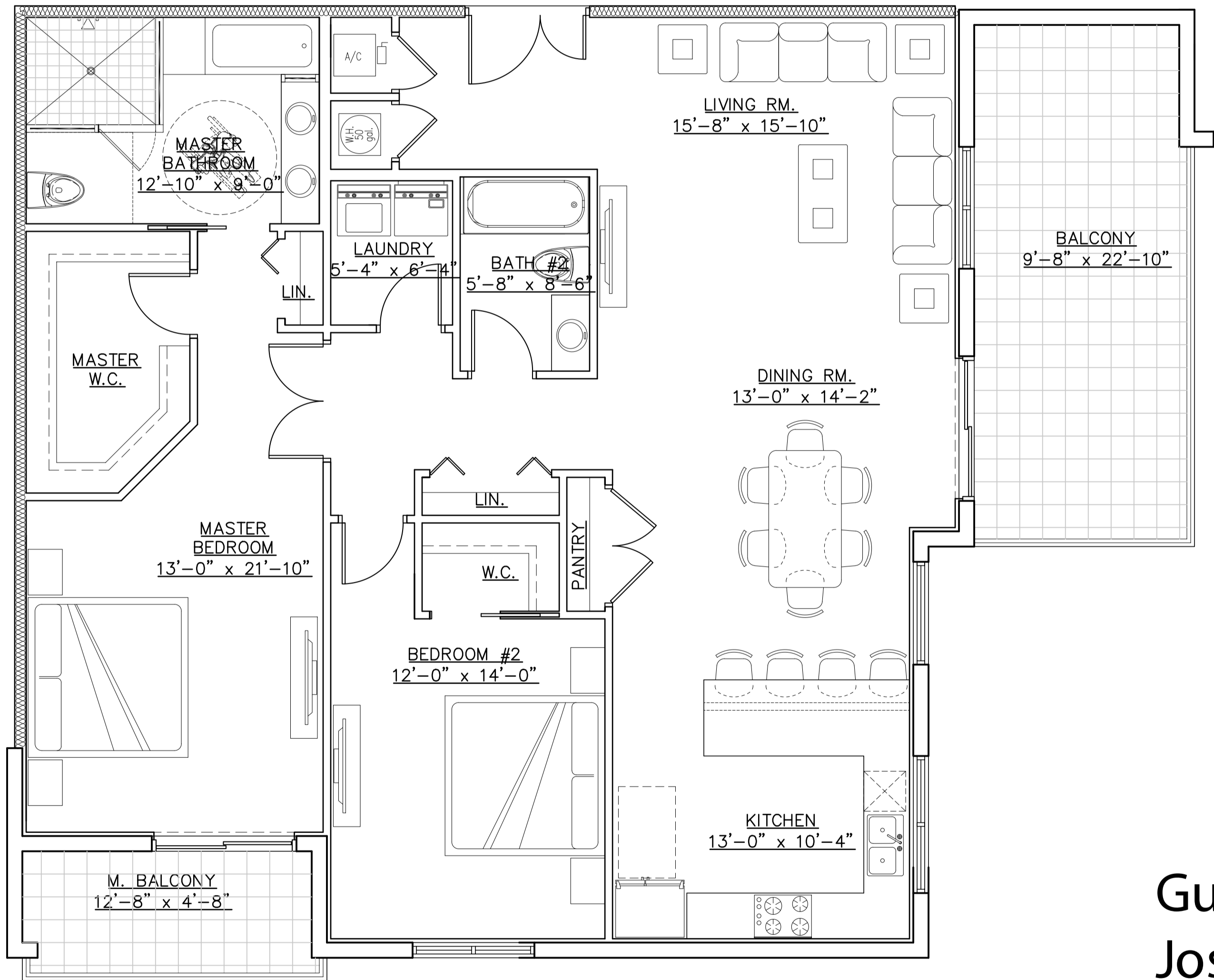


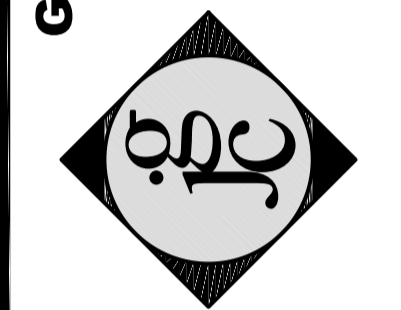
APT. #6
TOTAL A/C AREA = 1,552 SQ.FT.



APT. #4
TOTAL A/C AREA = 1,646 SQ.FT.

REVISION	BY:

GUSTAVO J. CARBONELL, P.A.
Architect and Planner
1457 N.E. 4th AVE.
Ft. Lauderdale, Florida, 33304
(954) 462-6565
Member American Institute of Architects
FLORIDA REGISTRATION
FAR NO. 0007957
AA NO. 26001131



PROPOSED MULTIFAMILY DEVELOPMENT FOR:
SABBIA BEACH PARCEL B
723 N. OCEAN BOULEVARD
Pompano Beach, Florida

Digitally signed
by Gustavo Jose
Carbonell -
Date: 2020.12.13
13:25:14 -05'00'
AA 26001131

DRAWN	M.J.G.
CHECKED	G.J.C.
DATE	JUNE 2020
SCALE	AS SHOWN
PROJECT NO.	20-025
SHEET NO.	4
OF	1
SHEETS	